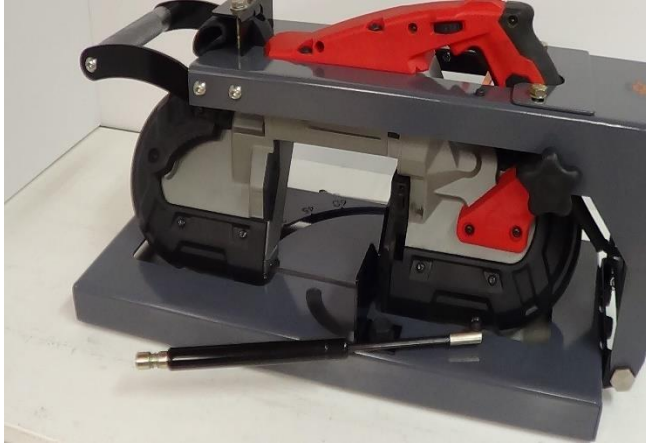


**STEPS TO INSTALL THE EZ-CUT JIG TO THE MILWAUKEE DEEP-CUT PORTABAND SAW
AND TO ADJUST AND STRAIGHTEN THE BLADE**

CAUTION! USER IS RESPONSIBLE FOR WORKING KNOWLEDGE AND USAGE OF A BANDSAW. JSR MANUFACTURING IS NOT RESPONSIBLE FOR ANY DAMAGES INCURRED WHILE USING THE EZ-CUT JIG WITH OR WITHOUT A BANDSAW.

The EZ-CUT JIG arrives with the following:



The Gas Spring unattached



Top Head Lock Bolts Loosened



Three (3) Base Hinge Loosened



Top Adjuster Plate Bolts Loosened

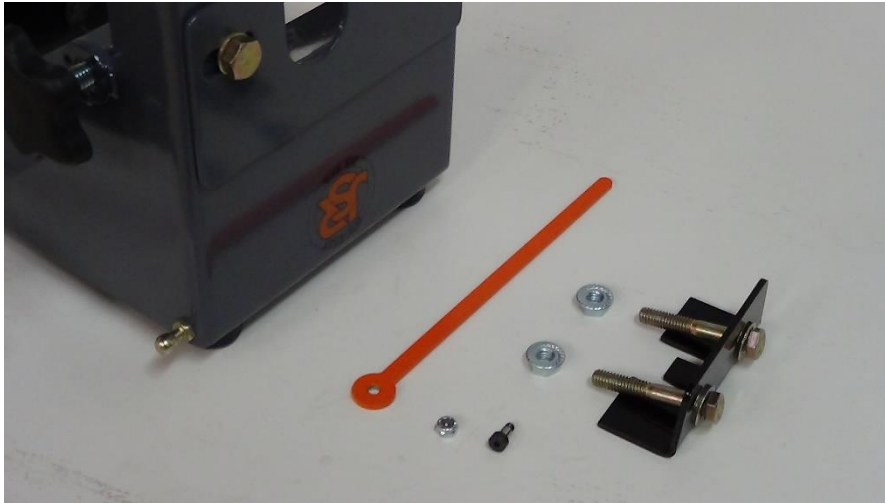


**One (1) 3/32 Hex Key and
Two (2) Shims**

STEPS TO INSTALL THE EZ-CUT JIG TO THE MILWAUKEE DEEP-CUT PORTABAND SAW
AND TO ADJUST AND STRAIGHTEN THE BLADE

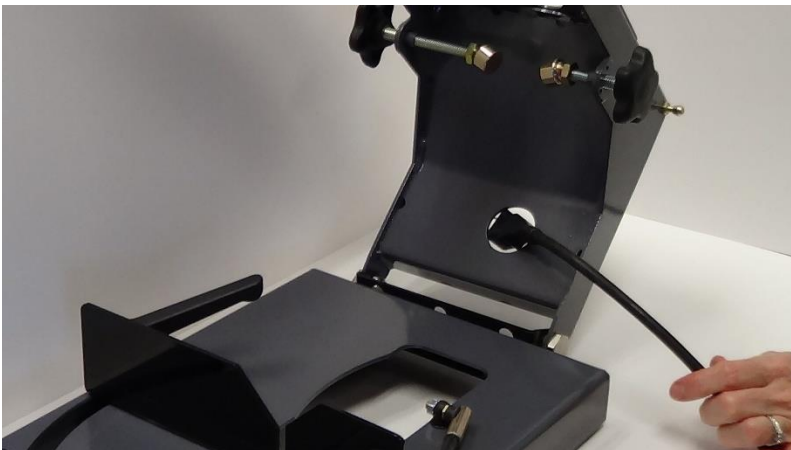
CAUTION! USER IS RESPONSIBLE FOR WORKING KNOWLEDGE AND USAGE OF A BANDSAW. JSR MANUFACTURING IS NOT RESPONSIBLE FOR ANY DAMAGES INCURRED WHILE USING THE EZ-CUT JIG WITH OR WITHOUT A BANDSAW.

To Install your EZ-CUT JIG to your Milwaukee Deep-cut Portaband Saw



**Remove the
Trigger Assembly
and Bolt.
Remove the Head
Lock and Bolts**

If your saw has a cord



**Thread the cord
through the hole
in the back of
the EZ-CUT JIG**



**Tilt the saw,
so it "sits" on
the EZ-CUT JIG**

**STEPS TO INSTALL THE EZ-CUT JIG TO THE MILWAUKEE DEEP-CUT PORTABAND SAW
AND TO ADJUST AND STRAIGHTEN THE BLADE**

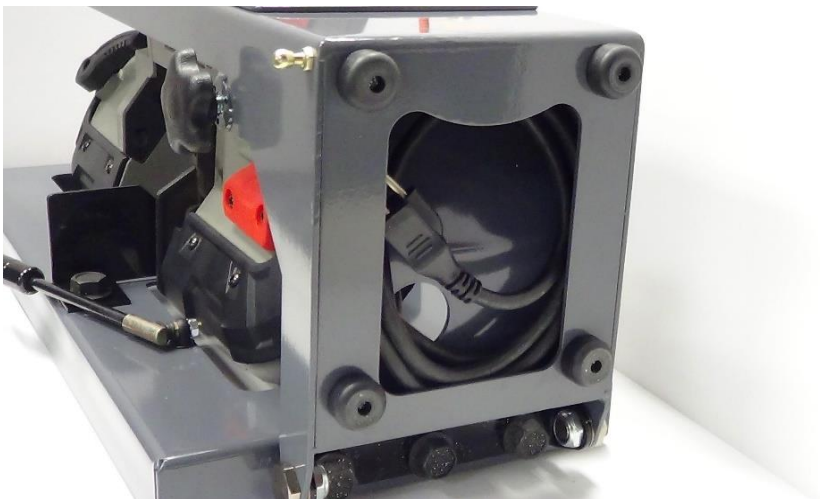
CAUTION! USER IS RESPONSIBLE FOR WORKING KNOWLEDGE AND USAGE OF A BANDSAW. JSR MANUFACTURING IS NOT RESPONSIBLE FOR ANY DAMAGES INCURRED WHILE USING THE EZ-CUT JIG WITH OR WITHOUT A BANDSAW.



Re-attach the Head Lock



**Tighten the Top two (2)
Head Lock Bolts
with 1/2" wrench**



**Store the cord in the
Cord Storage Space,
in the back of
the EZ-CUT JIG**

**STEPS TO INSTALL THE EZ-CUT JIG TO THE MILWAUKEE DEEP-CUT PORTABAND SAW
AND TO ADJUST AND STRAIGHTEN THE BLADE**

CAUTION! USER IS RESPONSIBLE FOR WORKING KNOWLEDGE AND USAGE OF A BANDSAW. JSR MANUFACTURING IS NOT RESPONSIBLE FOR ANY DAMAGES INCURRED WHILE USING THE EZ-CUT JIG WITH OR WITHOUT A BANDSAW.



Install the Trigger Assembly by Sliding the Trigger Arm on the underside of the Top of the EZ-CUT JIG

And Sliding the Trigger Arm through the open Trigger Slot



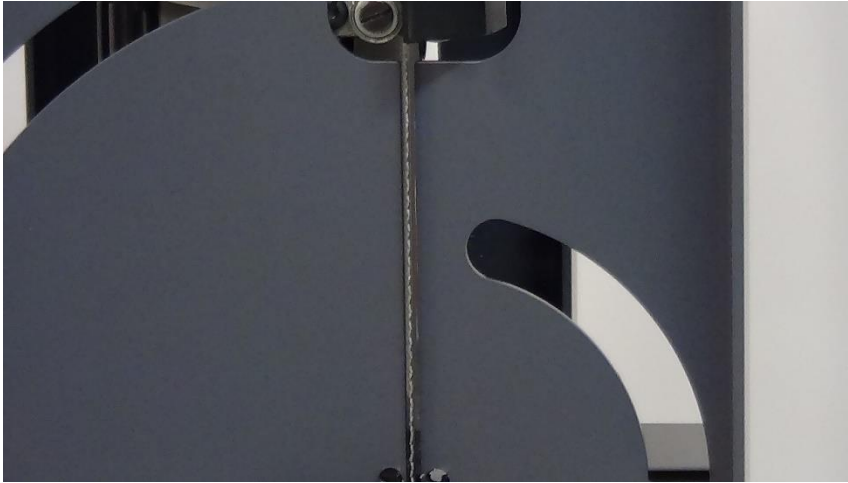
Tighten the Trigger Arm Bolt with 11/32 Nut Driver and the 3/32 Hex Key that comes with the EZ-CUT JIG



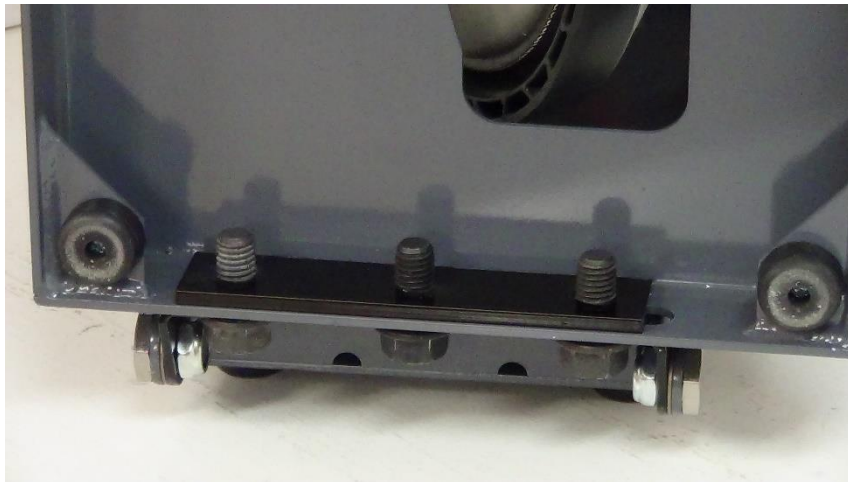
To Align the Blade find the Blade Slot on the Base of the EZ-CUT JIG by Swinging the Base up

**STEPS TO INSTALL THE EZ-CUT JIG TO THE MILWAUKEE DEEP-CUT PORTABAND SAW
AND TO ADJUST AND STRAIGHTEN THE BLADE**

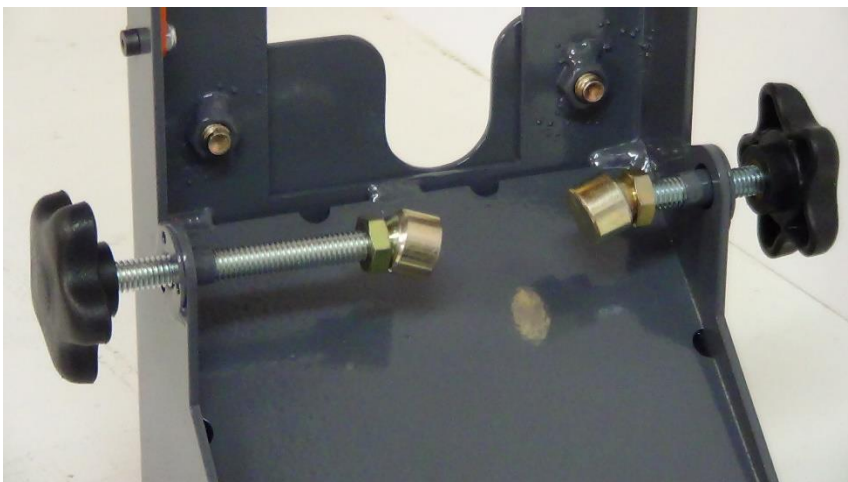
CAUTION! USER IS RESPONSIBLE FOR WORKING KNOWLEDGE AND USAGE OF A BANDSAW. JSR MANUFACTURING IS NOT RESPONSIBLE FOR ANY DAMAGES INCURRED WHILE USING THE EZ-CUT JIG WITH OR WITHOUT A BANDSAW.



While looking at the blade through the Blade Slot, Slide the Base Left and Right, until your Blade Aligns in the Blade Slot



Then Tighten-up the three (3) Base Hinge Adjuster Bolts with a 3/4" wrench



Fine tune the Blade Adjustment by Simultaneously turning both the Left and Right 5-Arm Knobs

**STEPS TO INSTALL THE EZ-CUT JIG TO THE MILWAUKEE DEEP-CUT PORTABAND SAW
AND TO ADJUST AND STRAIGHTEN THE BLADE**

CAUTION! USER IS RESPONSIBLE FOR WORKING KNOWLEDGE AND USAGE OF A BANDSAW. JSR MANUFACTURING IS NOT RESPONSIBLE FOR ANY DAMAGES INCURRED WHILE USING THE EZ-CUT JIG WITH OR WITHOUT A BANDSAW.



**Then Tighten-up the
two (2) Top Adjuster
Plate Bolts with a
9/16 wrench**



Attach the Gas Spring

Now it's time to give your EZ-CUT JIG a test run!

**STEPS TO INSTALL THE EZ-CUT JIG TO THE MILWAUKEE DEEP-CUT PORTABAND SAW
AND TO ADJUST AND STRAIGHTEN THE BLADE**

CAUTION! USER IS RESPONSIBLE FOR WORKING KNOWLEDGE AND USAGE OF A BANDSAW. JSR MANUFACTURING IS NOT RESPONSIBLE FOR ANY DAMAGES INCURRED WHILE USING THE EZ-CUT JIG WITH OR WITHOUT A BANDSAW.

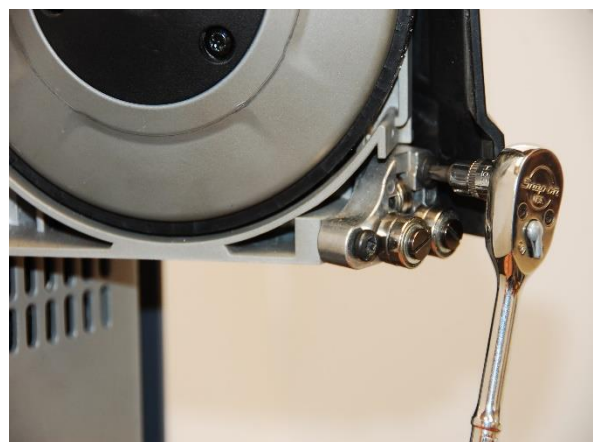
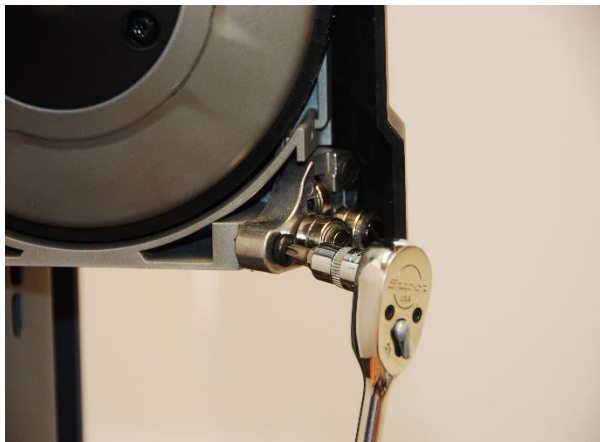
Sometimes the blade on the Milwaukee Bandsaw needs to be straightened. If this is the case, place a shim, that comes with your EZ-CUT JIG, between the Top Guide Roller Block of the Saw and the Body of the Saw.



Remove the blade from the bandsaw, which can easily be done while attached to the EZ-CUT JIG

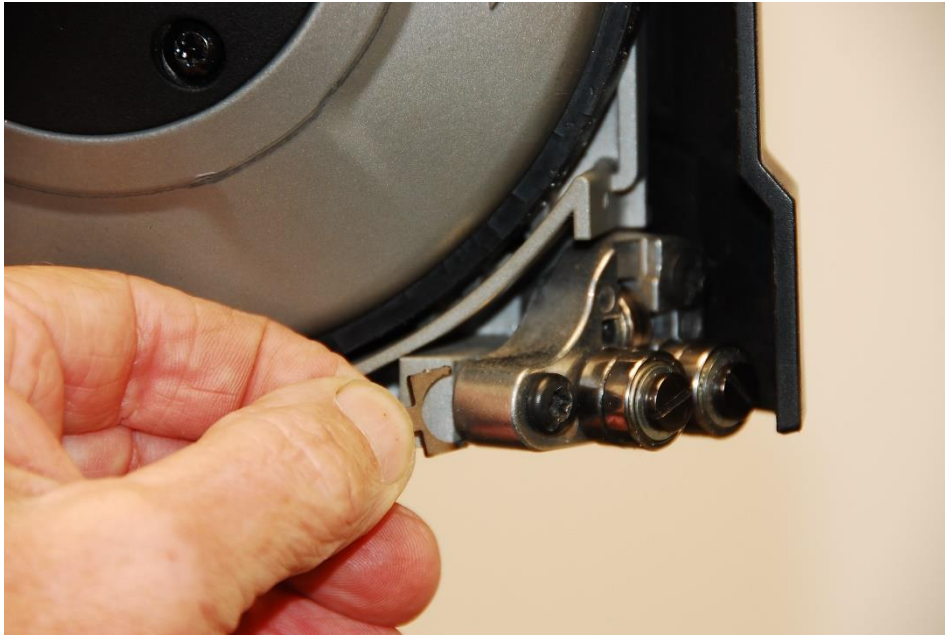
Use a T-25 Tork Bit to loosen the 2 Bolts on the Top Plastic Blade Guard

Loosen the 2 Bolts on the Top Guide Roller Block



**STEPS TO INSTALL THE EZ-CUT JIG TO THE MILWAUKEE DEEP-CUT PORTABAND SAW
AND TO ADJUST AND STRAIGHTEN THE BLADE**

CAUTION! USER IS RESPONSIBLE FOR WORKING KNOWLEDGE AND USAGE OF A BANDSAW. JSR MANUFACTURING IS NOT RESPONSIBLE FOR ANY DAMAGES INCURRED WHILE USING THE EZ-CUT JIG WITH OR WITHOUT A BANDSAW.



**Place a Shim
between the
Guide Roller
Block and the
Body of the saw**

Re-tighten the 2 Bolts on the Guide Roller Block

Retighten the two bolts on the Plastic Blade Guard

Re-install the blade

NOW YOUR SAW AND YOUR EZ-CUT JIG SHOULD BE GOOD TO GO!

**YOU CAN ALSO FIND MANY INSTALLMENT AND DEMO VIDEOS ON YOUTUBE,
INSTAGRAM, FACEBOOK AND ON OUR WEBSITE**

TELL US WHAT YOU THINK ON TWITTER

HAPPY CUTTING!

www.ez-cutjig.com

www.ez-cutjig.com